



# OFFICE INTERIORS

+91 98452 36428

#55, Annapoorneshwari Layout,  
Rajarajeshwari Nagar, Bangalore - 560056



# TABLE OF CONTENTS

- 02** About
- 03** Our Team
- 04** Our Services
- 07** Portfolio
- 16** Our Factory
- 19** Contact Us



# About Arkenza

At Arkenza Interiors, we specialize in transforming workspaces into modern, efficient, and inspiring office environments. From space planning to execution, our end-to-end solutions are designed to enhance productivity and reflect your brand identity.

Whether you're setting up a new office or revamping an existing space, we deliver smart layouts, premium finishes, and seamless project management — all tailored to meet the evolving needs of today's workplace. Let us create a workspace that works for you.

*Turnkey Interior Solutions With Production Unit: Delivering Seamless Design, Manufacturing, and Installation for Spaces Tailored to Perfection.*

Arkenza  
Office Interiors



# OUR TEAM-DESIGN

**Designers:** A skilled in-house team of designers proficient in comprehensive designing processes, Thoroughly understanding the Client requirements and picturing it in 3D visuals.

**Production Team:** A robust team of 50 professionals, including product designers, machine operators, and painters, oversees high-quality, timely production in our factory.

**Product Designers:** Work on product specifications, create detailed drawings or 3D models, and collaborate with clients to adjust designs based on feedback.

**Woodworkers/Craftsmen:** Skilled workers (carpenters, cabinetmakers, or furniture makers) to cut, shape, and assemble wood products according to designs.



# OUR SERVICES

- OFFICE INTERIOR DESIGN & BUILD
- CUSTOM WORKSTATIONS, STORAGE SOLUTIONS & MODULAR OFFICE FURNITURE DESIGN & MANUFACTURE

## OFFICE DESIGN

From modern startups to corporate headquarters, our office designs strike the perfect balance between functionality and professional aesthetics.



# COMPLETE INTERIOR SOLUTIONS

Transform your office into a functional, ergonomic, and visually striking workspace with our end-to-end interior design and execution services:

## 1. Modular Partition Systems

We specialize in both glass and solid partitioning, offering modular glass partitions for a sleek, modern look and fixed plywood or gypsum board systems for privacy and acoustic insulation.

## 2. Ergonomic Furniture Solutions

From customized workstations and executive cabin furniture to cafeteria setups, office chairs, and informal lounge seating, we ensure maximum comfort and productivity with our ergonomic designs tailored to your workflow.

## 3. Smart Storage Systems

Declutter your workspace with our versatile storage solutions, including open/closed units, full-height cabinets, medium and small storage units, and dedicated repro (print/storage) areas, all designed to blend with your interiors.

## 4. Ceiling & Flooring Expertise

Add functionality and style with our ceiling and flooring systems:

- **False Ceilings:** Choose from gypsum, grid, and baffle ceilings, engineered with NRC-rated acoustic properties to enhance sound quality and reduce noise.
- **Flooring Options:** We offer soft carpets, vitrified tiles, marble, granite, and raised (false) flooring to match your aesthetics and functional needs.

## 5. Indoor Landscaping & Artifacts

Enhance the vibe of your workplace with green elements, indoor plants, and curated artifacts that promote calmness and creativity.

## 6. Custom Signage & Graphics

Boost your brand presence with creative signage, directional systems, and wall graphics that blend functionality with visual appeal.

## 7. Premium Window Blinds

Choose from a range of stylish and practical blinds that control natural light while complementing your interior theme.



# MEP SERVICES

## 1. Electrical Systems

Includes raceways, cable trays, cabling, wiring, lighting, and UPS setup. We use smart Lighting Management Systems for better energy efficiency.

## 2. HVAC

Centralized AC with rectangular, spiral, and electrical ducts from AHU rooms to office areas. Solutions include VRF systems, PAC units for server and BMS rooms.

## 3. Networking

Structured UTP cabling from hub rooms to workstations. Installation of passive components like racks and switches ensures optimal signal quality and performance.

## 4. IBMS

Integrated systems for CCTV, fire alarms, PA systems, and fire safety including sprinklers, hydrants, and extinguishers.

## 4. FPS

Fire Protection Safety including sprinklers, hydrants, and extinguishers.



# FURNITURES

WORKSTATION, CABIN FURNITURE AND  
LOOSE FURNITURE



2025





# PARTITION SYSTEM

## MODULAR & FIXED



2025





# FALSE CEILING & FLOORING



2025





# MEP WORKS-ELECTRICAL



2025





# MEP WORKS-LIGHTS

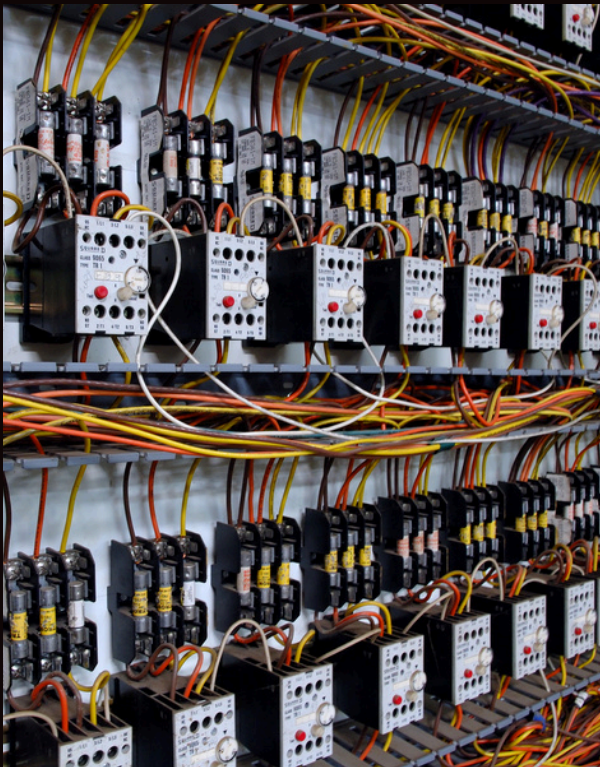
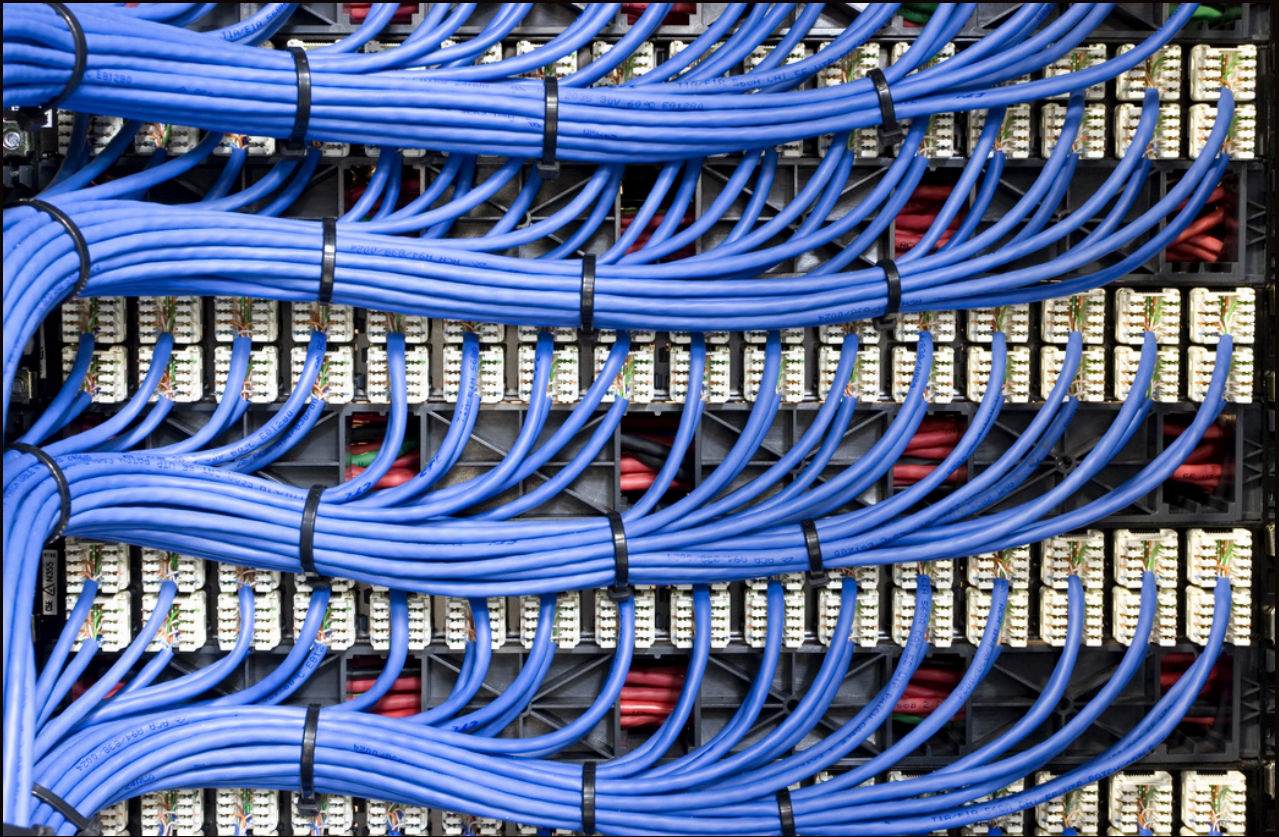


2025





# MEP WORKS-NETWORKING

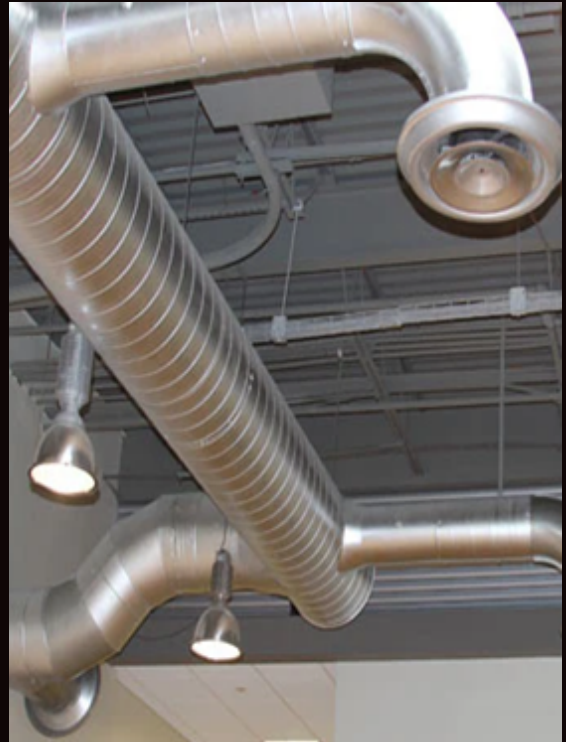


2025





# MEP WORKS-HVAC



2025





# MEP WORKS-IBMS WORKS



2025



# MEP WORKS- FIRE PROTECTION SYSTEM



2025





# OUR FACTORY

At Arkenza, we take pride in our integrated and well-equipped production units located in Tumkur Road, Bengaluru. Spanning over 15,000 sq. ft., our facilities are purpose-built for woodwork, PU coating, and uPVC door and window manufacturing.

Our factory features advanced machinery, including CNC 4-Axis routers, edge banders, cold press units, beam saw, panel saw, lock cutter. We also do PU coating. Overall, we ensure top-notch quality and consistency, from raw material handling to final dispatch, every process is streamlined with cutting-edge technology and a skilled workforce to deliver excellence in every product.

With dedicated spaces for assembly, storage, and finishing, Arkenza is equipped to handle large-scale production with a focus on innovation, durability, and design precision.





# OUR FACTORY





# OUR FACTORY







**ARKENZA**  
INTERIORS  
Pvt. Ltd.

Aesthetic Spaces. Engineered Within

**CONTACT US**

**+91 98452 36428**

**roy@arkenzainteriors.com**

**#55, Annapoorneshwari Layout,  
Rajarajeshwari Nagar, Bangalore  
- 560056**





ARKENZA  
INTERIORS  
Pvt. Ltd.

Aesthetic Spaces. Engineered Within

THANK YOU